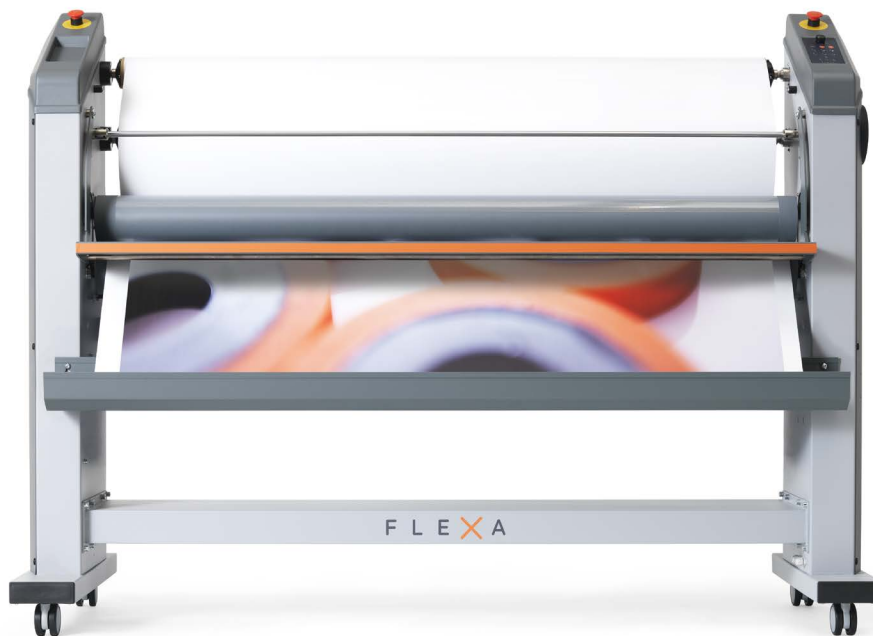


FLEXA

AUTOMATION FOR SIGN MAKERS



EASY LITE 160 HEAT-ASSISTED TOP ROLLER LAMINATOR

Professional heat-assisted top roller laminator for self-adhesive materials. It allows to laminate, mount and encapsulate. Designed to be reliable and easy-to-use for perfect and high quality results.

- > Cost-effective: very good quality, price and performance
- > Excellent results without air bubbles and defects
- > It mounts images on panels, applies double-sided adhesive films, application tape and protective film
- > Compact dimensions
- > Ideal for the small and medium sized user
- > Versatility in the materials used
- > Load and unload of rolls of materials in seconds
- > User-friendly control panel

SUITABLE FOR:

- Rigid and flexible indoor displays
- Floor graphics
- Backlit displays
- Pop-up & trade shows graphics
- Roll-up banners
- Board mounts
- Outdoor signs
- Car wrapping
- Many more..





Three aluminum shafts with automatic locking system



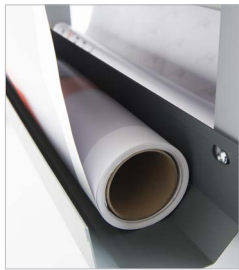
Millimeter scale on each shaft for the right positioning of the media



Swing-up steel feed table for quick set-up

Photosensitive cells with automatic self-control of safety devices and emergency buttons

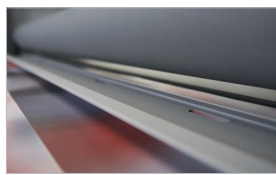
NEW New control panel design. New ergonomic position of the shafts for easy adjustments



Front tray for prints (optional)



- Rewinding shaft for adjusting the tension of the material
- Unwinding shaft for adjusting the tension of the material
- Unwinding shaft for printed media in rolls
- Front unwinding shaft (optional)
- Rear rewinding shaft (optional)



Feed-in guide (optional)

Feeding control by hand (control panel) or foot pedal (hand free operation)



Rear table with cutting unit (optional)

Working width	1600 mm (65 in)
Max. space between rollers	30 mm (1,2 in)
Coated rubber rollers	Ø 116 mm (4,6 in)
Heated upper roll preset	30°, 40°, 50° C (86°, 104°, 122° F)
Max. speed	5 m/min (16 ft/min)
Working height NEW	900 mm (35 in)
Power supply	230 V - 50 Hz - 3500 W
Dimensions (W x D x H)	2000 x 650 x 1480 mm (79 x 26 x 58 in)
Weight	190 kg (419 lb)
Packing Dimensions (W x D x H)	2150 x 850 x 1700 mm (85 x 33 x 67 in)
Packing Weight	260 kg (573 lb)

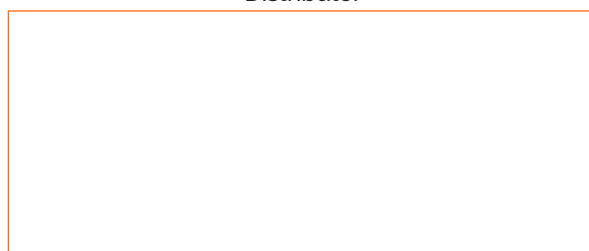
Manufactured in compliance with CE regulations



Follow us:



Distributor



100% Made by FLEXA



100% Made in Italy

